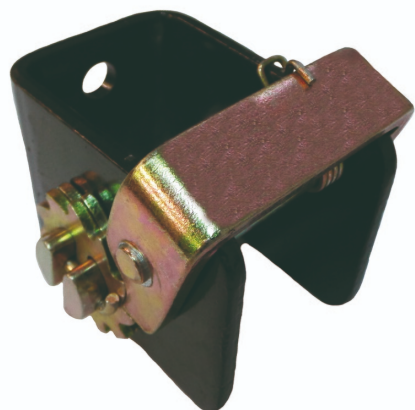




RSCW2

SUJECION MEDIANA 35/50 MM

Protection antichute



Applications

- Stockage

Certifications et normes



RSCW2

SUJECION MEDIANA 35/50 MM

Protection antichute

Détails - Normes

Détails techniques

Type d'équipement	Sangle d'arrimage
Composition du support principal	Acier
Couleur	Noir
Durée de vie à partir de la fabrication (ans)	20
Poids (kg)	1,64








RSCW2

MEDIUM CARGO LASHING 35/50MM

Fall protection

Logistics information

Reference	Colour	Size	Designation	EAN13	Box code			Weight			
WXERSCW2	Black	One size	RSCW2	0	0	12	1	18.8 kg	35.0 cm	23.0 cm	19.0 cm

 Multiple sales

 Minimum sales

 Box Width

 Box Depth

 Box Height